

**ROR1 antibody (C-term)**  
**Purified Rabbit Polyclonal Antibody (Pab)**  
**Catalog # AP22444b**

**Specification**

---

**ROR1 antibody (C-term) - Product Information**

Application	WB,E
Primary Accession	<a href="#">Q01973</a>
Reactivity	Human, Mouse
Host	Rabbit
Clonality	polyclonal
Isotype	Rabbit Ig
Calculated MW	104283

**ROR1 antibody (C-term) - Additional Information**

**Gene ID** 4919

**Other Names**

Inactive tyrosine-protein kinase transmembrane receptor ROR1, Neurotrophic tyrosine kinase, receptor-related 1, ROR1, NTRKR1

**Target/Specificity**

This antibody is generated from a rabbit immunized with a KLH conjugated synthetic peptide between amino acids from human.

**Dilution**

WB~~1:1000

E~~Use at an assay dependent concentration.

**Format**

Purified polyclonal antibody supplied in PBS with 0.09% (W/V) sodium azide. This antibody is purified through a protein A column, followed by peptide affinity purification.

**Storage**

Maintain refrigerated at 2-8°C for up to 2 weeks. For long term storage store at -20°C in small aliquots to prevent freeze-thaw cycles.

**Precautions**

ROR1 antibody (C-term) is for research use only and not for use in diagnostic or therapeutic procedures.

**ROR1 antibody (C-term) - Protein Information**

**Name** ROR1

**Synonyms** NTRKR1

**Function** Has very low kinase activity in vitro and is unlikely to function as a tyrosine kinase in vivo (PubMed:[25029443](#)). Receptor for ligand WNT5A which activate downstream NFkB signaling pathway and may result in the inhibition of WNT3A-mediated signaling (PubMed:[25029443](#), PubMed:[27162350](#)). In inner ear, crucial for spiral ganglion neurons to innervate auditory hair cells (PubMed:[27162350](#)). Via IGFBP5 ligand, forms a complex with ERBB2 to enhance CREB oncogenic signaling (PubMed:[36949068](#)).

#### Cellular Location

Membrane; Single-pass type I membrane protein. Cell projection, axon {ECO:0000250|UniProtKB:Q9Z139}

#### Tissue Location

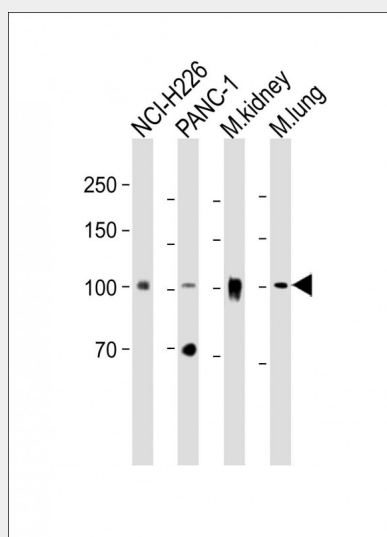
Expressed strongly in human heart, lung and kidney, but weakly in the CNS. Isoform Short is strongly expressed in fetal and adult CNS and in a variety of human cancers, including those originating from CNS or PNS neuroectoderm

### ROR1 antibody (C-term) - Protocols

Provided below are standard protocols that you may find useful for product applications.

- [Western Blot](#)
- [Blocking Peptides](#)
- [Dot Blot](#)
- [Immunohistochemistry](#)
- [Immunofluorescence](#)
- [Immunoprecipitation](#)
- [Flow Cytometry](#)
- [Cell Culture](#)

### ROR1 antibody (C-term) - Images



All lanes: Anti-ROR1 antibody (C-term) at 1:1000 dilution Lane 1: NCI-H226 whole cell lysate Lane 2: PANC-1 whole cell lysate Lane 3: Mouse kidney lysate Lane 4: Mouse lung lysate Lysates/proteins at 20 µg per lane. Secondary: Goat Anti-Rabbit IgG, (H+L), Peroxidase conjugated (ASP1615) at 1/15000 dilution. Observed band size: 104 KDa Blocking/Dilution buffer: 5% NFDM/TBST.

**ROR1 antibody (C-term) - Background**

Has very low kinase activity in vitro and is unlikely to function as a tyrosine kinase in vivo (PubMed:25029443). Receptor for ligand WNT5A which activate downstream NFkB signaling pathway and may result in the inhibition of WNT3A-mediated signaling (PubMed:25029443, PubMed:27162350). In inner ear, crucial for spiral ganglion neurons to innervate auditory hair cells (PubMed:27162350).

**ROR1 antibody (C-term) - References**

Masiakowski P.,et al.J. Biol. Chem. 267:26181-26190(1992).  
Reddy U.R.,et al.Oncogene 13:1555-1559(1996).  
Gregory S.G.,et al.Nature 441:315-321(2006).  
Mural R.J.,et al.Submitted (SEP-2005) to the EMBL/GenBank/DDBJ databases.  
Bainbridge T.W.,et al.PLoS ONE 9:E102695-E102695(2014).